



Oxford Blue  
EST 1968  
ENGLAND



It is with pleasure that we present to you our latest collection of clothing from Oxford Blue. We are proud to offer you our range of garments which are made in our own factories in the Heart of England.

Established in 1968, Oxford Blue is one of Europe's leading leisure brands, keeping people warm and dry outdoors in more than 17 countries.

A family run business, Oxford Blue designs and manufactures a variety of outer wear, jackets, knitwear, trousers, hats, scarves, ties and socks, for both men and women, using only the very highest quality fabrics and lining materials, brought together by age old craftsmanship, care and attention.

We are proud to say that we have a great network of long established fabric mills and trim suppliers in the UK, which helps us to keep our product offering at the leading edge of country styling and fashion.

We are not only a brand but a quality manufacturer, supplying many high street blue chip companies all over the world with our private label production. Our minimums are low compared to other factories due to our self sufficiency and ability to adapt to customers requirements.

We look forward to doing business with you!



## W08

### Brighton Parka Staywax

*100% Washable waxed cotton  
100% Cotton printed lining  
Hood  
Moleskin collar  
2-way zipper  
Zipped pockets*



Black



White



Sand



Grey

## W239

### Burley Discovery

*100% Cotton  
Poly/Viscose paisley lining  
Detachable hood  
Moleskin collar  
2-way zipper  
2 Handwarmer pockets  
2 Bellows pockets  
Double storm flap  
Throat tab*



Khaki



Mustard



Navy



Red

## W234

### New England Discovery

*100% Cotton  
Poly/Viscose paisley lining  
Detachable hood  
Collar with drawstring  
Moleskin trim  
2-way pockets  
2-way zipper*



Red



Mustard



Khaki



Navy

## W236

### Hooded Katrina Discovery

*100% Cotton  
Poly/Viscose paisley lining  
Moleskin trim  
Hood with drawstring  
Adjustable side tabs  
2 way zipper  
Zipped Cuffs*



Red



Mustard



Khaki



Navy



Beige

## LTW01

### Tweed Blazer

100% Wool  
Teflon Coated  
Fully lined  
Leather buttons  
Single rear vent  
2 Jetted Pockets  
Ticket pocket



Biscuit



Sea Blue

## HW97

### Lilly Tweed Hat

100% Wool  
Teflon Coated  
Polyester lining



Biscuit



Light Green



Sea Blue

## LTW06

### Long Line Tweed Coat

100% Wool  
Teflon Coated  
Fully Lined  
Trimmed in faux leather  
Back Vent  
2 Jetted pockets  
Detachable throat tab



Light Green



Biscuit



Sea Blue



W49

.....  
**Katrina Tartan Wax Jacket**

*Waxed yarn dyed cotton  
100% Cotton lined  
Moleskin trim  
2-way zipper  
2 Adjustable rear tabs  
Buckle throat tabs  
Zipped cuffs*



**Blackwatch**

HW69

.....  
**Chelsea Tartan  
Wax Hat**

*Waxed Yarn Dyed Cotton  
100% Cotton lined*



**Blackwatch**



**Caledonia**



**Honey**



**Caledonia**



**Honey**

## W3I5

---

### Katrina Hooded Tartan Wax Jacket

*Waxed yarn dyed cotton  
100% Cotton lined  
Hood with drawstring  
Adjustable side tabs  
Moleskin trim  
2-way zipper  
Zipped cuffs*



Caledonia



Honey



Blackwatch

## HW38

---

### Thelma Tartan Wax Hat

*Waxed yarn dyed cotton  
100% Cotton lined  
Moleskin Trim*



Blackwatch



Caledonia



Honey

## WI6

---

### Tartan Cape

*Waxed yarn dyed cotton  
100% Cotton lined  
Moleskin trim*



Blackwatch

## HW90

---

### Lilly Tartan Wax Hat

*Waxed Yarn Dyed Cotton  
100% Cotton lined  
Moleskin Trim*



Caledonia



Honey



Blackwatch

## W306

### Kensington Tartan Wax Jacket

*Waxed yarn dyed cotton  
100% Cotton quilted lining  
Moleskin trim  
2 way zipper  
Double vented  
Removeable belt  
2-way bellows pockets  
Detachable throat tab*



Honey



Blackwatch



Caledonia

## W04

### Eltham Tartan Wax Jacket

*Waxed yarn dyed cotton  
100% Cotton lined  
Moleskin trim  
2-way zipper  
Adjustable side tabs  
2 Handwarmer pockets  
2 Patch pockets  
Zipped cuffs*



Honey



Blackwatch



Caledonia



WII

Wax Cape

*Waxed cotton  
100% Cotton tartan lining  
Moleskin trim*



Navy



Navy



Olive



Brown



Sand



W47  
Katrina Wax Jacket

*Waxed cotton  
100% Cotton tartan lining  
Corduroy trim  
2 way zipper  
2 Adjustable tabs on back of  
jacket  
Adjustable throat tabs  
Zipped cuffs*

## W03

### Eltham Wax Jacket

*6oz Waxed cotton  
100% Cotton tartan lining  
Corduroy trim  
2-way zipper  
Adjustable side tabs  
2 Handwarmer pockets  
2 Patch pockets  
Zipped cuffs*



Olive



Navy



Brown

## W89

### Utility Wax Jacket

*Waxed cotton  
Quilted lining  
Moleskin trim  
1-way zipper  
Adjustable side tabs  
Zipped cuffs  
4 patch pockets*



Blackberry



Brown



Sand



Olive

## W308

### Ambre Wax Jacket

*8oz Waxed cotton  
100% Cotton tartan lining  
Corduroy trim  
2-way zipper  
Adjustable back tabs  
2 Zipped handwarmer  
pockets  
Adjustable cuffs  
Twin vents*



Sand



Green



Brown

## W2I8

### Katrina Hooded Wax Jacket

*6oz Waxed cotton  
100% Cotton tartan lining  
Hood with drawstring  
Adjustable side tabs  
Corduroy trim  
2-way zipper  
Zipped cuffs*



Navy



Green



Brown





## W3I4

### Kensington Wax Jacket

*6oz Waxed cotton  
100% Cotton quilted  
tartan lining  
Corduroy trim  
2 way zipper  
Double vented  
Removeable belt  
2-way bellow  
patch pockets  
Detachable  
throat tab*



Navy



Green



Brown

## WI2

### Newbury Quilted Wax Gilet

*4oz Waxed cotton  
100% Cotton quilted  
tartan lining  
Corduroy trim  
2 way zipper  
Adjustable side tabs  
2-way bellow  
patch pockets*



Sand



Navy



Olive



Sand



Black



Blue



Olive



Red



Navy



### W307

#### Fly Weight Wax Jacket

- 4oz Waxed cotton
- 100% Cotton tartan lining
- Breathable/Waterproof drop liner
- Detachable hood
- Corduroy trim
- Drawstring waist

## W59

### Highgate Quilted Jacket

*100% Polyester quilted  
Corduroy trim  
Twin vents*



Green



Brown



Black



Navy

## W33

### Newbury Quilted Gilet

*100% Quilted polyester  
Corduroy trim  
2 way zipper  
Adjustable side tabs  
2-way Bellows pockets*



Green



Brown



Black



Navy

## LF202

### Ladies Full Zip Fleece

*100% Polyester  
Anti-pill fleece  
320 Grams  
Zipped pockets*



Green

Navy

## LF 20I

### Ladies Fleece Gilet

*100% Polyester  
Anti-pill fleece  
320 Grams  
Zipped pockets*



Green

Navy

## LJ057

### Rossol Long Cape

*100% Polyester  
Taped Seams  
Acrylic check lining  
Detachable hood  
Corduroy trim  
2 way zipper  
Leg Straps*



Brown



Dark Beige



Green

LJ056

Tricot Short Cape

100% Polyester  
Taped Seams  
Acrylic check lining  
Detachable hood  
Corduroy trim  
2 way zipper



Brown



Green



Dark Beige



Blackberry

HW9I

Aussie Feather Hat

6oz Waxed cotton  
100% Cotton tartan lining



Brown



Navy



Green





Wine



Navy



Green



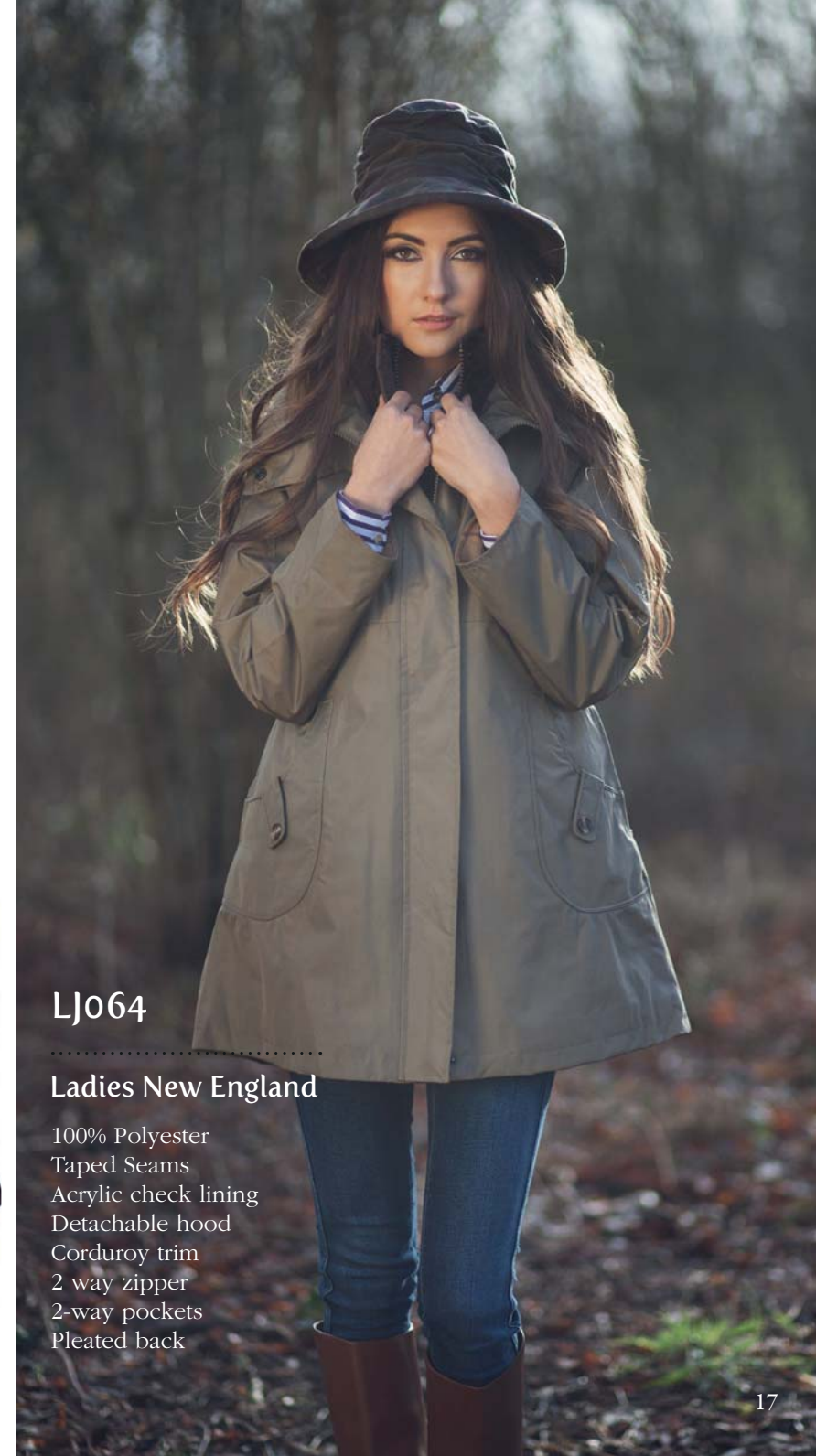
Dark Beige



Brown



Blackberry



LJ064

Ladies New England

- 100% Polyester
- Taped Seams
- Acrylic check lining
- Detachable hood
- Corduroy trim
- 2 way zipper
- 2-way pockets
- Pleated back



## W222

### Tweed Blazer

*100% Wool  
Teflon Coated  
Leather Buttons  
Satin lining  
Double vents  
Ticket pocket*



Brown



Navy

## W225

### Balmoral Tweed Waistcoat

*100% Wool  
Teflon Coated  
Leather Buttons  
Satin lining*



Brown



Navy

## W209

### Tartan Chelsea Wax Jacket

*Waxed yarn dyed cotton  
100% Cotton quilted lining  
Moleskin trim  
2 Bellow patch pockets  
2-Way zipper  
Detachable throat tab  
Side vents  
Adjustable cuffs*



Honey



Caledonia



Blackwatch

## WI75

### Tartan Chelsea Wax Gilet

*Waxed yarn dyed cotton  
100% Cotton quilted lining  
Moleskin trim  
2-Way patch pockets  
2-Way zipper  
Twin rear vents*



Honey



Caledonia



Blackwatch

## WI5

### Countryman Padded HYBRID

*Washable waxed cotton  
100% Cotton quilted  
tartan lining  
Detachable hood  
Corduroy trim  
2 Handwarmer pockets  
2 Bellows patch pockets  
2-way zipper  
Storm cuffs*



Dark Brown



Olive



Tan



Yellow

## W2I

### York Gilet HYBRID

*Washable waxed cotton  
100% Cotton quilted  
tartan lining  
Corduroy trim  
2 Handwarmer pockets  
2 Bellows pockets  
2-way zipper*



Dark Brown



Olive



Tan



Yellow



Green



Chestnut



Gold



Caramel



W2I2

**Chelsea Wax Jacket**

- 8oz. Waxed cotton*
- Antique*
- 100% Cotton tartan*
- quilted lining*
- Corduroy trim*
- 2 Patch below pockets*
- 2 way antique zipper*
- Detachable throat tab*
- Side vents*
- Adjustable cuffs*

W05

Kingsbridge Wax Jacket

- 8oz. Waxed cotton Antique*
- 100% Cotton tartan quilted lining*
- Corduroy trim*
- 2 Handwarmer pockets*
- 2 Bellows pockets*
- 2 way zipper*
- Detachable throat tab*
- Adjustable cuffs*
- Drawstring hem*



Chestnut



Gold



Caramel



Green



Brown



Navy



Green

**W2I0G**

**Antique Gamekeeper  
Wax Jacket**

- 8oz. Waxed cotton Antique*
- 100% Cotton tartan lining*
- Zippered poacher pocket*
- Detachable hood*
- Corduroy trim*
- 2 Handwarmer pockets*
- 2 Bellows pockets*
- 2 way zipper*
- Throat tab*
- Storm cuffs*



Green

**W0I**

**Countryman Wax  
Jacket**

- Waxed cotton*
- 100% Cotton quilted  
tartan lining*
- Detachable hood*
- Corduroy trim*
- 2 Handwarmer pockets*
- 2 Bellows Patch pockets*
- 2-way zipper*



## WI74

### Chelsea Wax Gilet

*8oz. Waxed cotton Antique  
100% Cotton tartan quilted  
lining  
Corduroy trim  
2-Way patch pockets  
2-way zipper  
Twin rear vents*



Caramel



Green



Chestnut

## WI4

### Countryman Padded Wax Jacket

*Waxed cotton  
100% Cotton quilted  
tartan lining  
Detachable hood  
Corduroy trim  
2 Handwarmer pockets  
2 Bellow pockets  
2-way zipper*



Brown



Navy



Green



## W10

### Burley Wax Jacket

*6oz Waxed cotton  
100% Cotton tartan lining  
Detachable hood  
Internal fasteners to accept  
W32 Thermal Liner  
Corduroy trim  
2 Handwarmer pockets  
2 Bellows pockets  
2-Way zipper  
Throat tab  
Twin rear vents*



Navy



Green



Brown

## W84

### York Wax Gilet

*6oz Waxed cotton Antique  
100% Cotton quilted  
tartan lining  
Corduroy trim  
2 Handwarmer pockets  
2 Bellows pockets  
2-way zipper*



Brown



Green



W20

**Balmoral Wax Jacket**

*6oz Waxed cotton  
100% Cotton tartan lining  
Corduroy trim  
Adjustable side tabs  
4 Patch pockets  
2 way zipper  
Twin rear vents*



Brown



Navy



Green

WI43

**Thistle Quilted Gilet**

*100% Polyester  
2-way patch pockets  
Faux suede shoulder patches*



Sage

WI71

**Thistle Quilted Jacket**

*100% Polyester  
2-way patch pockets  
Faux suede elbow and  
shoulder patches*



Sage

W73

**Hobart Outback  
Antique Wax Cape**

*8oz. Waxed cotton Antique  
100% Cotton tartan lining  
Detachable cape  
Corduroy trim  
2 Bellow patch pockets  
2-way zipper  
Leg straps*



Brown

HW08

**Leather Cowboy Hat**

*100% Leather cowhide  
Chin strap*



Brown





# BRITISH MILLERAIN

*Staywax® is an innovative washable waxed cotton. British Millerain use a special blend of waxes to create a fabric with a slightly drier hand than traditional wax, with the added benefit of being machine washable.*

**W06**

.....  
**Hampton Staywax**

*100% Washable waxed cotton  
Raglan Sleeve  
Corduroy collar  
Elasticated storm cuffs  
Throat tab  
2 Bellow pockets  
2 Handwarmer pockets*



Beige

**W240**

.....  
**Chelsea Staywax**

*100% Washable waxed cotton  
100% Cotton tartan lining  
Moleskin trim  
2 Bellow patch pockets  
2-Way zipper  
Detachable throat tab  
Side vents  
Adjustable cuffs*



Navy



Caramel

WI7

Quilted Kensington  
Gilet Jacket

*4oz Quilted waxed cotton  
100% Cotton tartan  
lining  
Corduroy trim  
2-Way pockets*



Sand



Navy



Olive

W25

Quilted Wax Jacket

*4oz Quilted waxed cotton  
100% Cotton tartan  
lining  
Corduroy trim  
Corduroy elbow  
patches  
2-Way bellow  
pockets  
Twin rear vents*



Sand



Navy



Olive



## W37

---

### Brampton Tweed Jacket

60% Wool/40% Mixed Fibres  
100% Polyester quilted lining  
Moleskin trim to cuffs  
and collar  
Breathable and waterproof  
taped seams drop liner  
2-Way zipper  
2 Bellows pockets  
2 Handwarmer pockets  
Pocket stay straps  
Storm cuffs



Sage 5433/2I



Dark Green 5907/5I



Lovat 5433/22

## W53

---

### Brampton Tweed Gilet

60% Wool/40% Mixed Fibres  
100% Polyester quilted lining  
Moleskin collar  
2-Way zipper  
2-Way bellows pockets  
2 Handwarmer pockets  
Pocket stay straps  
Leather trim on pockets



Sage 5433/2I



Dark Green 5907/5I



Lovat 5433/22

## MFI01

---

### Mens 1/2 Zip Fleece

*100% Polyester anti-pill fleece*

*320 Grams*

*Zipped pockets*



Green



Navy

## MFI02

---

### Mens Fleece Gilet

*100% Polyester anti-pill fleece*

*320 Grams*

*Zipped pockets*



Green



Navy

## MFI03

---

### Mens Full Zip Fleece

*100% Polyester anti-pill fleece*

*320 Grams*

*Zipped pockets*



Green



Navy

## MFI04

---

### Mens Bonded Fleece Gilet

*100% Polyester bonded anti-pill fleece*

*320 Grams*

*Zipped pockets*



Green



Navy

## W34

### Mens Highgate Quilted Jacket

*100% Polyester quilted  
Corduroy trim and binding  
Twin rear vents*



Black



Navy



Green



Brown

## HW30

### Quilted Flat Cap

*100% Quilted polyester*



Navy

Green



Black

Brown

## W32

### Thermal Liner for W10 Burley

*100% Polyester  
Corduroy binding*





## MT001

---

### Moleskin Trousers

*100% Cotton moleskin*

*Regular fit*

*Waist sizes: 30" - 46"*

*Leg lengths:*

*29" Short*

*31" - Regular*

*33" - Long*



Lovat



Navy



Olive



Tan



Wine

## MT002

---

### Corduroy Trousers with Adjustable Elastic Waist

*100% Cotton 11 whale*

*Regular fit*

*Waist sizes: 30" - 48"*

*Leg lengths:*

*27" Short*

*29" - Regular*

*31" - Long*



Tan



Navy



Wine

## KI9

---

### Crew Neck Wool Sweater

*100% Virgin wool  
Suede shoulder and elbow patches*



Brown



Green



Ecru

## K2I

---

### 1/2 Zip Wool Sweater

*100% Virgin wool  
Suede shoulder and elbow patches*



Green



Navy



Sage

## MCS20I

---

### Mens London Tattersall Long Sleeve Shirt

100% Cotton  
Yarn dyed  
Button down collar  
Breast pocket



Green



Navy



Red

## LCS20I

---

### Ladies London Tattersall Long Sleeve Shirt

100% Cotton  
Yarn dyed



Green



Navy



Red

## SH1

### Men's Tattersall Long Sleeve Shirt

50% Cotton/50% Polyester

Yarn dyed

Breast pocket with buttoned flap



Red



Green



Blue

## SH2

### Men's Dogstooth Long Sleeve Shirt

50% Cotton/50% Polyester

Yarn dyed

Breast pocket with buttoned flap



Green



Navy

## SH15

### Mens Big Tattersall Long Sleeve Shirt

50% Cotton/50% Polyester

Yarn dyed

Breast pocket with buttoned flap



Brown/Blue

## SH27

### Men's York Check Long Sleeve Shirt

50% Cotton/50% Polyester

Yarn dyed

Breast pocket with buttoned flap



Green



Beige

## SH28

### Men's Norfolk Tweed Long Sleeve Shirt

50% Cotton/50% Polyester

Yarn dyed

Breast pocket with buttoned flap



Olive

## SH39

### Men's Darwen Long Sleeve Shirt

50% Cotton/50% Polyester  
Yarn dyed  
Breast pocket with buttoned flap



Brown



Mustard



Green

## SH36

### Mens Rutland New Check Long Sleeve Shirt

50% Cotton/50% Polyester  
Yarn dyed  
Breast pocket with buttoned flap



Red/Brown

## SH40

### Men's County Check Long Sleeve Shirt

50% Cotton/50% Polyester  
Yarn dyed  
Breast pocket with buttoned flap



Green



Wine

## HW30

---

### Quilted Flat Cap

*100% Quilted polyester*



Black



Brown



Green



Navy

## HW31

---

### Wax Flat Cap

*6oz Waxed cotton  
100% Cotton tartan lining*



Brown



Green



Navy

## HW32

---

### Tweed Flat Cap

*60% Wool/40% Mixed Fibres  
100% Polyester lining*



Sage  
5433/2I



Dark Green  
5907/5I



Lovat  
5433/22

## HW32L

---

### Leather Trim Tweed Flat Cap

*60% Wool/40% Mixed Fibres  
Real leather  
100% Polyester lining*



Sage  
5433/2I



Lovat  
5433/22



Dark Green  
5907/5I

## HW40

---

### Quilted Wax Flat Cap

*4oz. Waxed cotton  
100% Cotton tartan lining*



Navy



Sand



Olive



Black

## HW43

---

### Tweed Flat Cap

*100% Wool  
Teflon coated*



27



I2-Green

## HW49

---

### Tartan Wax Flat Cap

*Waxed yarn dyed cotton  
100% Cotton lining*



Blackwatch



Caledonia



Honey

## HW57

---

### Helmsley Tweed Flat Cap

*100% Wool  
Teflon Coated  
Polyester Lining*



04-Pink



05-Mustard



10R



15-Heather

## HW34

### Quilted Bush Hat

*100% Quilted polyester*



Black



Brown



Green



Navy

## HW36

### Wax Quilted Bush Hat

*Waxed yarn dyed cotton*

*Japara 4oz*

*100% Cotton tartan lining*



Black



Navy



Olive



Sand

## HW95

### Tartan Wax Bush Hat

*Waxed yarn dyed cotton*

*100% Cotton lining*



Blackwatch



Honey



Caledonia

## HW77

### Wax Bush Hat

*6oz Waxed cotton*

*100% Cotton tartan lining*



Brown



Green



Navy



## HW92

### Harris Tweed Patchwork Flat Cap

100% Wool  
100% Polyester lining



*Harris Tweed is a cloth handwoven by islanders at their homes in the Outer Hebrides of Scotland, finished in the Outer Hebrides, and made from pure virgin wool dyed and spun in the Outer Hebrides.*

*Harris Tweed is protected by the Harris Tweed Act 1993, which strictly outlines the conditions in which the cloth can genuinely be made.*

*Authentic Harris Tweed is issued with the Harris Tweed Orb Mark after inspection by the Harris Tweed Authority, the industry's governing body*



# Harris Tweed

## HW88

### Harris Tweed Flat Cap

100% Wool  
100% Polyester lining



AR9-E63



AC9I42



HA200-EI

## HW66

### Harris Tweed Bush Hat

100% Wool  
Quilted polyester lining



HA200-AI



JD602I



AC9225

## HW69

---

### Chelsea Tartan Wax Hat

*Waxed Yarn Dyed Cotton  
100% Cotton lined*



Blackwatch



Caledonia



Honey

## HW97

---

### Lilly Tweed Hat

*100% Wool teflon coated  
Polyester lining*



Biscuit



Light Green



Sea Blue

## HW90

---

### Lilly Tartan Wax Hat

*Waxed yarn dyed cotton  
100% Cotton lining*



Honey



Blackwatch



Caledonia

## HW9I

---

### Aussie Feather Hat

*6oz. Waxed cotton  
100% Cotton tartan lining*



Green



Navy



Brown

## HW44

### Thelma Wax Hat (Antique)

8oz Waxed cotton  
100% Cotton tartan lining



Brown



Gold



Green

## HW33

### Thelma Wax Hat (6oz)

6oz Waxed cotton  
100% Cotton tartan lining



Green



Navy



Brown

## HW38

### Thelma Tartan Wax Hat

Waxed yarn dyed cotton  
100% Cotton lining



Blackwatch



Honey



Caledonia



542

Mens Knee High  
Hunting Socks (2 pack)

54% Acrylic  
20% Polyamide  
26% Wool



205

Mens Thremo Socks  
(3 pack)  
Grey//Jeans/Navy Blue

58% Acrylic  
20% Polyamide  
22% Wool



205

Mens Thremo Socks  
(3 pack)  
Sand/Brown/Khaki Green

58% Acrylic  
20% Polyamide  
22% Wool



205

Mens Thremo Socks  
(3 pack)  
Medium Grey/Antracite/Black

58% Acrylic  
20% Polyamide  
22% Wool



I49

Mens Socks  
(2 pack)

40% Acrylic  
45% Wool  
15% Polyamide



544

Mens Knee High  
Camouflag Socks (2 pack)

54% Acrylic  
20% Polyamide  
26% Wool



392

Mens True Heel  
Socks (3 pack)

54% Acrylic  
20% Polyamide  
26% Wool



233

Mens Knee High Lambs  
Wool Socks (2 pack)

70% Virgin Lambs Wool  
30% Polyamide



I50

Mens Knee High  
Socks (2 pack)

40% Acrylic  
45% Wool  
15% Polyamide



GT8

Woven Silk Tie  
2 Ducks



GT9

Woven Silk Tie  
Pheasant



GT10

Woven Silk Tie  
Duck



GT11

Woven Silk Tie  
Stag



Navy

Wine

Gold

Green

GT1

Silk Neck Tie



Green

Wine

GT2

Silk Neck Tie + Cufflink  
Boxed Set



Green

Wine

WT3

Wax Aerosol  
Spray 250 ml



GT5

Silk Bowtie



Wine



Green

GT3

Silk Scarf



Wine



Green

GT4

Silk Handkerchief



Wine



Green

ACC01

Scarf



Green



Navy

WT2

Large Wax Tin  
200ml



WT1

Small Wax Tin  
50 grams





[www.oxford-blue.com](http://www.oxford-blue.com)

Oxford Blue Limited | 60-62 Constitution Hill | Birmingham | B19 3JT | United Kingdom  
Tel : +44 (0)121 233 1372 | Fax : +44 (0)121 236 6392 | Email : [info@oxford-blue.com](mailto:info@oxford-blue.com)